

TIME ADJUSTMENT SOFTWARE
ST-4003W

ST-4003W is a Windows software that enables you to easily set the internal clock of the various Icom products by connecting the PC and the product with a USB cable.

System requirements

(As of November 2021)

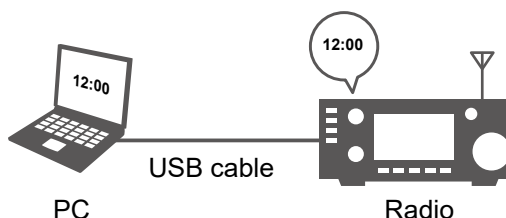
Operating system

Microsoft Windows 11 (64 bit)
 Microsoft Windows 10 (32/64 bit)
 Microsoft Windows 8.1 (32/64 bit)

① This instruction document is based on ST-4003W version 1.00 and Windows 10. Display indications may differ, depending on the PC's OS.

Compatible radios and cables

With this software, you can set the internal clock of the Icom radios listed below. Connect your PC to your radio through a USB cable.



Compatible radio	Radio's USB port type	Required item
IC-705	Micro-B	Purchase the proper USB cable that matches your device's USB port. *You can also use the supplied USB cable.
IC-7100*	Mini-B	
IC-7300	Type-B	
IC-7600	Type-B	
IC-7610	Type-B	
IC-7850/IC-7851	Type-B	
IC-9700	Type-B	

NOTE: Download the USB driver and the installation guide from the Icom website. Enter the radio's model name into the Search box in the site.

Icom website

<https://www.icomjapan.com/support/>

Installation

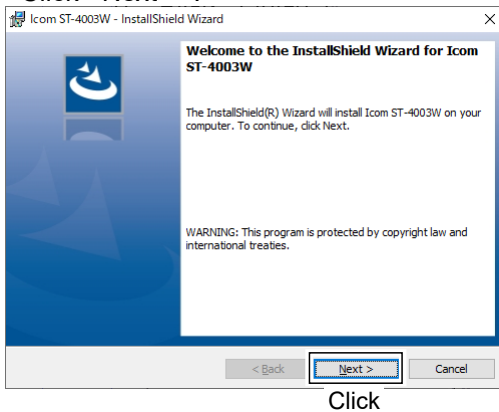
Before the installation:

- Confirm Windows has completed its startup.
- Sign in as an **administrator**.
- Be sure no other applications are running.

1. Unzip the file downloaded from the Icom website.
(https://www.icomjapan.com/support/firmware_driver/)
2. Double click the executable file in the unzipped folder.
① When “User Account Control” is displayed, click <Yes> to continue.
3. Select a language, and then click <OK>.

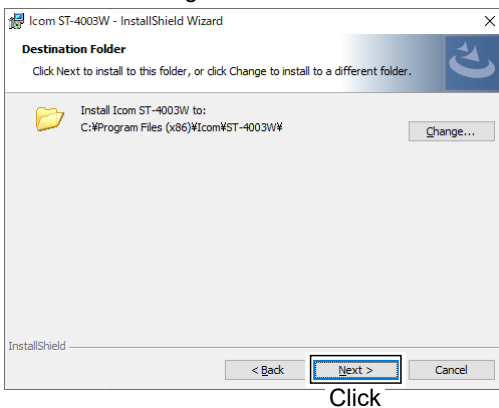


4. Click <Next >>.

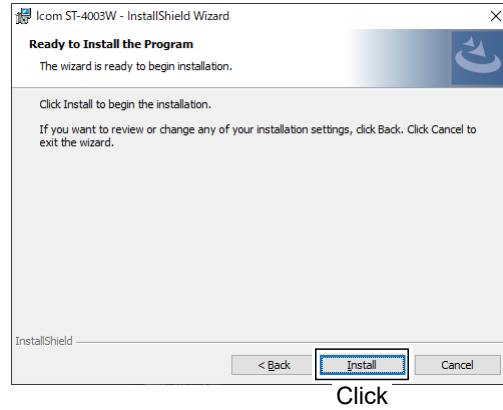


5. Click <Next >>.

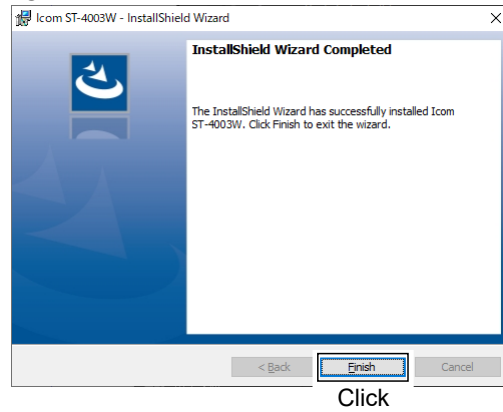
① To select another destination folder, click <Change...> before clicking <Next >>.



6. Click <Install>.



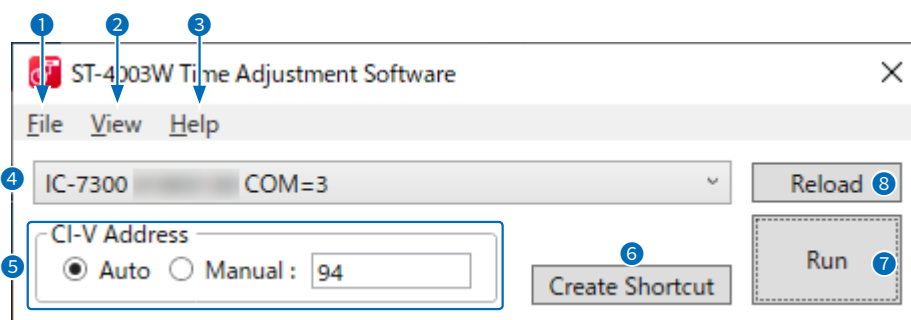
7. Click <Finish>.



① “Icom ST-4003W Time Adjustment” is added to the Windows Start menu, and a shortcut icon is created on the desktop.

NOTE: To uninstall the application, use the “Apps & features” in the “System” menu.
(Start > Settings > Apps > Apps & features)

Operating screen



1 File

Exit: Click to close the software.

2 View

Language: Click to select the language to be displayed on the Language list screen.

3 Help

About: Click to open the About window and display the version number.

4 Radio list

Select the radio for which you want to set the time.

① The radio model name, the serial number, and the COM port number are displayed.

5 CI-V Address

Select whether to automatically detect the CI-V address or manually set it.

① When the CI-V address of the radio is the default setting, or the Transceive function is set to ON, the CI-V address is automatically detected.

① If you select "Manual," enter the CI-V address into the text box.

Selectable range: 01 to DF

6 Create Shortcut

Click to create a shortcut icon on the desktop.

You can launch the software with the following presettings from the created shortcut.

Preset items: Radio model name
Serial number
CI-V Address (If selected "Manual")

7 Run

Click to set the radio time to match your PC.

8 Reload

Click to reload the radio list.

Operation

1. Open the ST-4003W.
2. Click <Run>.
 - The date and time are sent from your PC to the radio.
 - When successful, "The date and time settings have been completed." is displayed.
 - ① Depending on the radio, it may take about 1 minute to set the date and time. Even if you cancel the setting while "Sets the seconds." is displayed, the radio's approximate time (± 1 minute) has been set.
3. Click <OK> to close the window.

NOTE: You cannot make the date and time settings under the following conditions.

For the radio:

- Turning OFF the radio.
- In the Standby mode.
- Programming the setting data.
- Updating the firmware.
- Importing or exporting a CSV format file.
- Saving the settings.
- Measuring the antenna SWR.

For the PC:

- If the CI-V address for the radio is not correct.
- The USB driver is not installed properly.
- The USB cable is not firmly connected.