



Application

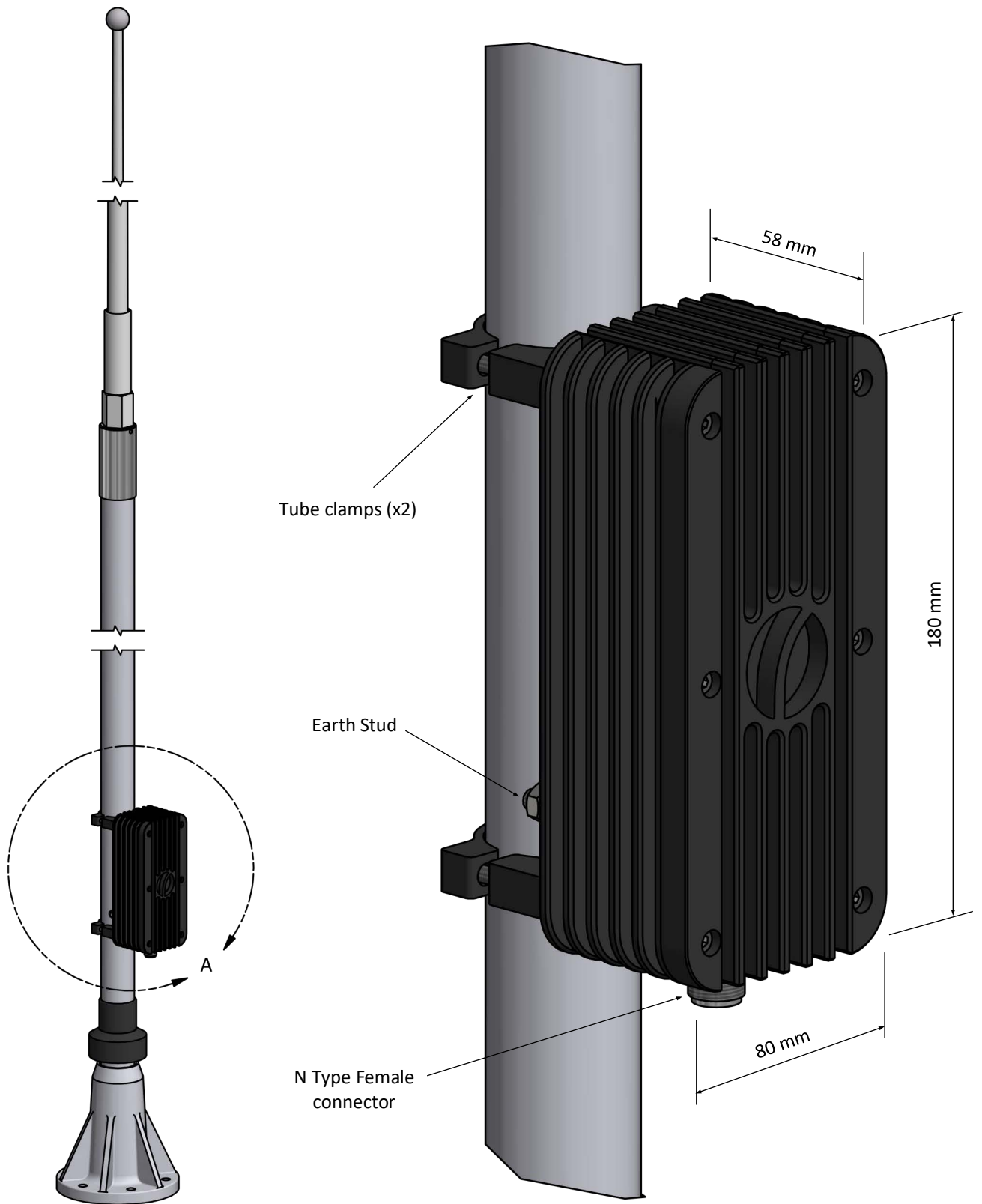
- Passive transformer for use with Comrod side feed 8 and 10 m whips
- 4-30 MHz (can be used from 2 MHz with a reduction in gain)
- 50 ohm, N type female connector
- 150 W CW
- Broadband - no tuning
- Gain comparable to a commercial maritime tuner and whip
- Reduced cabling – no DC power required

Electrical specifications

Frequency range	4-30 MHz (can be used from 2 MHz with reduced gain)
Nominal impedance	50 ohm
Power rating	150 W CW
Gain	Comparable to an active tuner
Connector	N type female
DC-grounded	Yes

Mechanical specifications

Design	Broadband passive transformer. Housing manufactured from aluminium.
Dimensions	180 x 80 x 58 mm (see page 2)
Weight	1.7 kg
Finish	Black
Temperature range	-55 °C, +55 °C; -67 °F, +131 °F
Water Proofing	IP67



Mounting Sizes

The AT-T is mounted onto the antenna using built-in tube clamps compatible with either 8m (AT82) or 10m (AT100) modular series HF whips. The AT-T is positioned to connect directly with the side feed of the antenna.

AT-T-45
AT82 - Ø44.5mm

AT-T-66
AT100 - Ø66mm

